



Getting Started with Your Lumens Visual Presenter

For DC133, DC155 and DC160

Table of Contents

Introduction.....	1
Lumens Visual Presenter Components.....	2
Base Unit Operating Functions.....	2
Overview of Connection.....	3
Connecting Your Visual Presenter to a Projector.....	4
Connecting Your Visual Presenter to a Computer.....	4
How to Capture Images to Your Visual Presenter.....	4

Overview of Connections

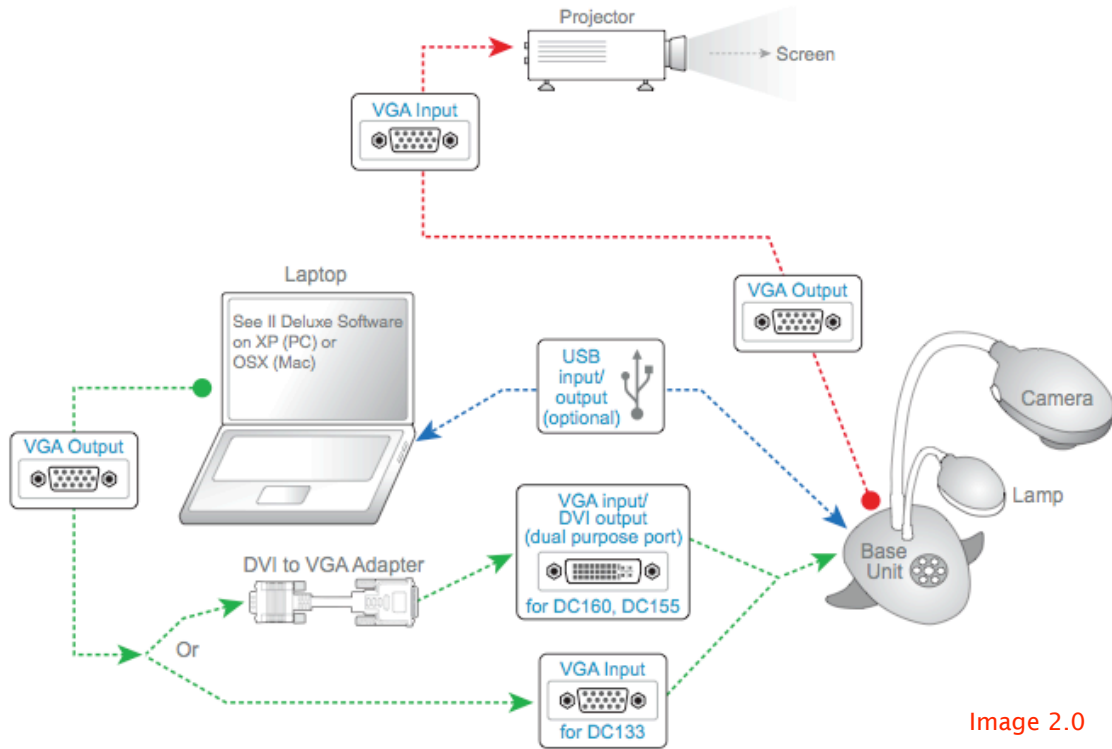


Image 2.0

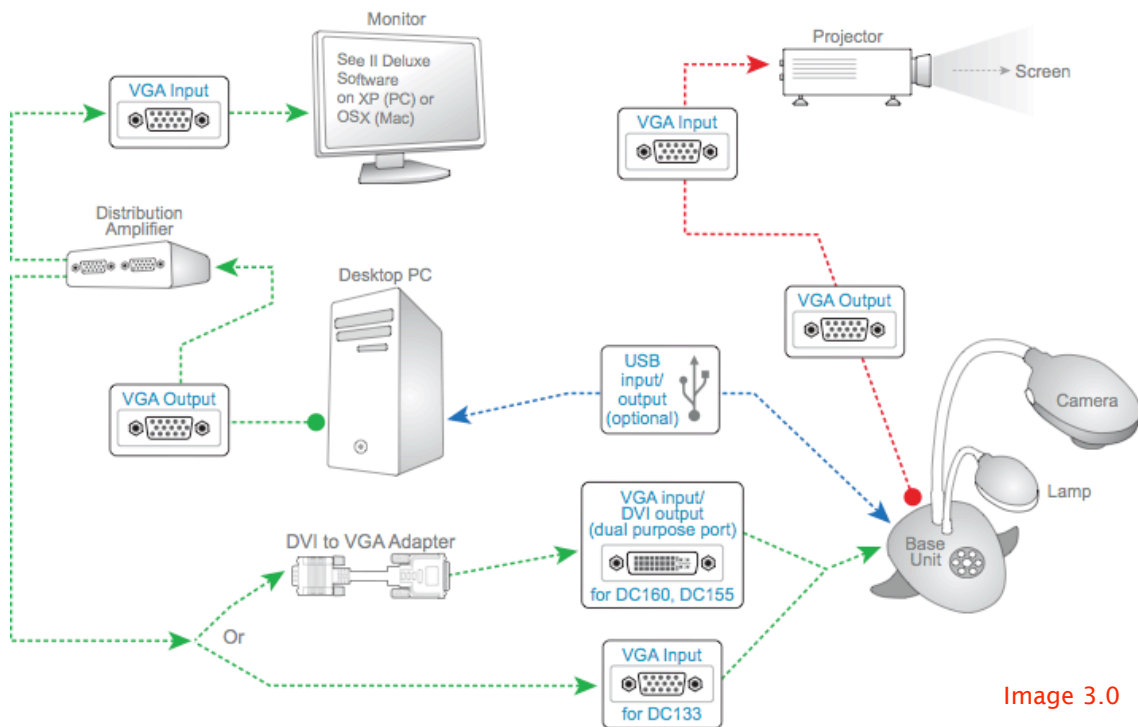
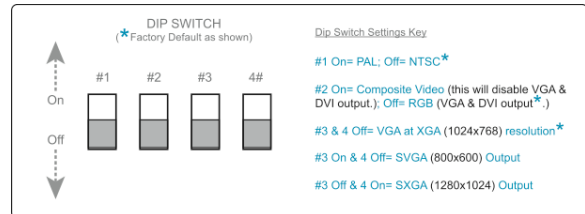


Image 3.0

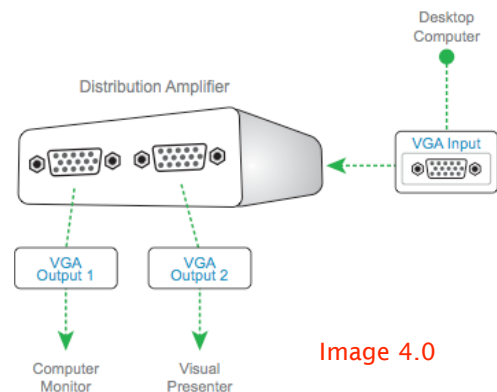
Connecting Your Visual Presenter to a Projector

1. Connect the VGA output port on the visual presenter base unit (A on Image 1.0) to the projector's VGA input port using the VGA cable that came with your visual presenter.
2. Power up both the base unit and the projector.
3. Check the projector source selection to ensure it is set to the correct port so that the camera image can be displayed on the screen.
4. You should be able to see your image on the screen. If not:
 - a. Press the **Source** button on the projector and cycle through its available input options. Ensure that it is set to VGA input.
 - b. If your image is still undetected, power down the base unit of the visual presenter and make sure the dip switch on the bottom of the unit is set to RGB. Power up the base unit and try again.



Connecting Your Visual Presenter to a Computer

1. For a laptop, simply connect the VGA output of your laptop to the visual presenter's VGA input port. (See Image 2.0)
2. For a desktop, you need a device called Distribution Amplifier (DA) connected to your computer's VGA output port. The DA accepts the signals from the computer and distributes them to visual presenter and computer monitor simultaneously. (See Image 4.0)
 - a. First, connect your desktop computer's VGA Output to the Distribution Amplifier's input port. (See Image 3.0 & 4.0)
 - b. Then, connect one of the Distribution Amplifier's VGA output ports to the visual presenter's input port using the VGA cable that came with your presenter. This takes care of sending the images from the computer to the visual presenter.
 - c. To display the images simultaneously on your computer monitor as well as the visual presenter, connect the Distribution Amplifier's second VGA output port to your computer monitor's input port.



Now you are all set to receive images from your visual presenter and see them on your computer monitor.

How to Capture Images to Your Visual Presenter

The visual presenter has the ability to internally capture JPEG images.

1. Simply press the **Capture** button on the base unit or on the remote control and watch the top left corner of the screen for "**Processing**" to indicate that the current image is being saved into the visual presenter's internal memory.
2. Press the **Play** button on the base unit or on the remote control to display thumbnails of all the images stored in the visual presenter's internal memory on the screen.
3. Select the image you wish to display and press the **Enter** button. You can use the forward and backward arrow keys to advance or back up to the appropriate images.
4. Press the **Menu** button twice to return to the current live image from the visual presenter.